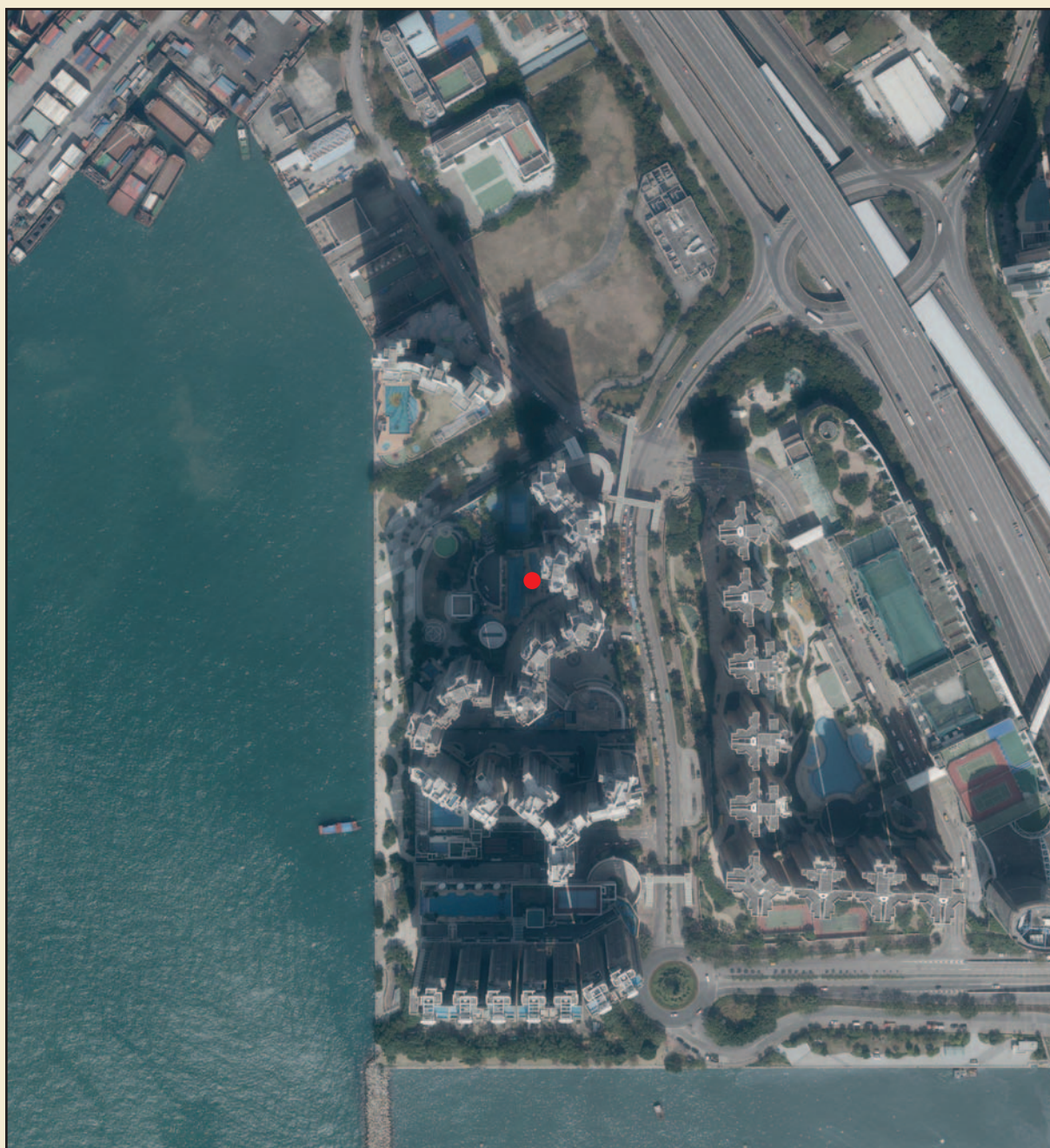


# AERIAL PHOTOGRAPH OF THE DEVELOPMENT

## 發展項目的鳥瞰照片



● Location of the Development 發展項目的位置

Adopted from part of the aerial photograph taken by the Survey and Mapping Office of Lands Department at a flying height 6,900 feet, Photo No. E014441C (Date of Flight: 13 Feb 2017)

摘錄自地政總署測繪處於 2017 年 2 月 13 日在 6,900 呎飛行高度之鳥瞰照片，編號為 E014441C。

### Notes:

1. The Vendor advises purchasers to conduct on-site visit for a better understanding of the Development, its surrounding environment and public facilities nearby.
2. Survey and Mapping Office, Lands Department, The Government of HKSAR © copyright reserved - reproduction by permission only.
3. The aerial photograph may show more than the area required under the Residential Properties (First-hand Sales) Ordinance due to the technical reason that the boundary of the Development is irregular.

### 附註：

1. 賣方建議買方到該發展項目作實地考察，以獲得該發展項目及周邊地區的環境及公共設施較佳的了解。
2. 香港特別行政區政府地政總署測繪處版權所有，未經許可，不得翻印。
3. 由於發展項目的邊界不規則的技術原因，以上鳥瞰照片可能顯示多於《一手住宅物業銷售條例》所要求顯示的範圍。